



# Financial Managers' Meeting

February 28, 2017

‡ Sa f e t y

‡ Sl i p s

± It

± Wh e r e  
p l a c e s

± B

± Ex i t i n g

± Sl o p e s

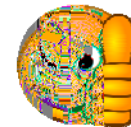
± Sh a d y

± St a i r s

# January

## Fund 1 Unreserved Fund Balance

	2017	2018	2019	2020
eLearning	102,683	6,056	278,812	188,432
OUT	53,775	58,307	4,585	38,726
VORONE	457,074	227,667	530,000	434,602
CTC	91,147	126,496	40,000	50,000



	FY17 Actual	FY16 Actual	FY17 Actual	FY16 Actual	Cycle 07	Year End
CABINET	Cycle 07	Cycle 07	Recovery	Recovery	FY06 to FY07	FY06 to FY07
Provost	20,137,583	18,526,791	22,393,654	20,209,840	8.7%	10.8%
Central Administration	5,164,871	5,435,572	4,523,625	5,544,174	0.0%	-18.4%
Office Information Technology	140,162	154,894	177,162	1,045,370	0.6%	6.5%
Grand Total	25,442,616	24,117,257	27,094,441	26,799,384	85.4%	3.1%



	FY17 Actual	FY16 Actual	FY17 Actual	FY16 Actual	Cycle 07	Year End
CABINET	Cycle 07	Cycle 07	Recovery	Recovery	FY06 to FY07	FY06 to FY07
Provost	3,675,193	3,588,077	6,578,784	6,815,711	2.4%	-3.5%
Central Administration	1,227,142	1,401,117	1,171,070	1,670,001	2.8%	0.0%
Office Information Technology	4,786,355	4,728,063	5,344,587	8,313,612	4.5%	3.4%
Grand Total	9,688,690	9,717,257	13,094,441	16,800,324	2.9%	3.0%

# ‡ A N N O U N C E M

‡ y° \ k



‡ u\ ° ) ‡

‡ U "

‡ 7' k h

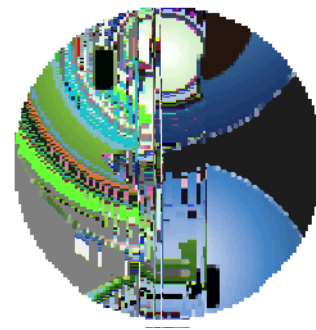
‡ O k @



# DISCUSSIONS

7" " )

\ 'u



± FY 17

*Locations announced prior to each meeting.*

U